

RCH Water Supply Corporation

2020 Monthly Water Consumption

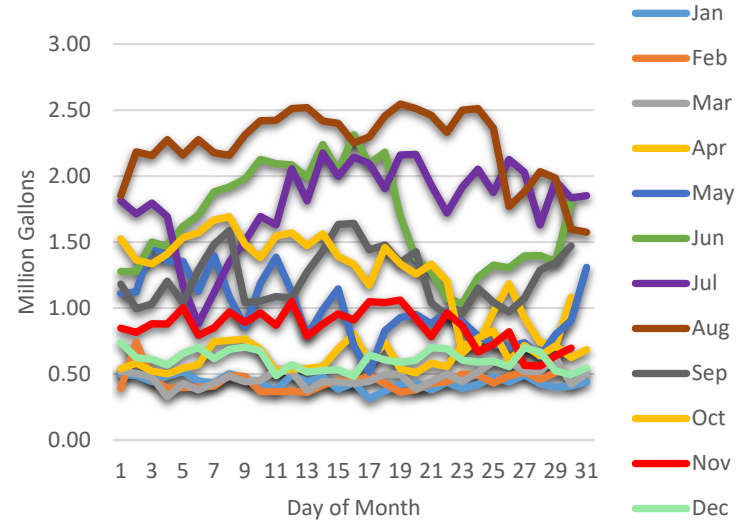
		Total Usage To Date 386.9 Million											
		Jan	Feb	Mar	Apr	May	Jun	Jul	Aug	Sep	Oct	Nov	Dec
Day		13.6	12.9	14.7	20.4	30.8	50.0	55.8	69.3	37.0	37.8	25.7	18.8
		Total Gallons Per Day (Millions)											
	1	0.496	0.392	0.522	0.540	1.112	1.277	1.812	1.851	1.182	1.525	0.847	0.738
	2	0.490	0.742	0.506	0.582	1.121	1.278	1.713	2.184	0.996	1.365	0.817	0.623
	3	0.441	0.465	0.475	0.521	1.498	1.500	1.795	2.155	1.031	1.336	0.881	0.612
	4	0.483	0.392	0.328	0.501	1.354	1.465	1.694	2.277	1.205	1.411	0.879	0.569
	5	0.519	0.399	0.428	0.544	1.355	1.620	1.173	2.160	1.041	1.533	1.003	0.656
	6	0.448	0.401	0.379	0.570	1.126	1.705	0.880	2.276	1.290	1.571	0.793	0.701
	7	0.433	0.407	0.430	0.745	1.399	1.881	1.117	2.176	1.484	1.668	0.850	0.617
	8	0.502	0.489	0.483	0.754	1.084	1.917	1.349	2.158	1.587	1.692	0.971	0.686
	9	0.464	0.480	0.443	0.766	0.858	1.977	1.508	2.312	1.041	1.482	0.892	0.704
	10	0.428	0.368	0.451	0.688	1.187	2.127	1.695	2.420	1.053	1.380	0.963	0.674
	11	0.377	0.366	0.527	0.521	1.385	2.095	1.632	2.423	1.087	1.547	0.869	0.489
	12	0.492	0.370	0.518	0.540	1.121	2.086	2.056	2.511	1.075	1.570	1.052	0.571
	13	0.443	0.361	0.373	0.541	0.788	1.991	1.812	2.519	1.274	1.473	0.786	0.514
	14	0.478	0.416	0.442	0.555	0.989	2.241	2.175	2.417	1.435	1.563	0.880	0.527
	15	0.384	0.453	0.440	0.692	1.145	2.035	2.000	2.400	1.633	1.392	0.957	0.532
	16	0.436	0.438	0.428	0.803	0.717	2.314	2.144	2.252	1.642	1.332	0.910	0.483
	17	0.313	0.489	0.444	0.587	0.515	2.090	2.096	2.296	1.442	1.172	1.048	0.647
	18	0.372	0.429	0.500	0.741	0.828	2.181	1.906	2.457	1.479	1.458	1.042	0.606
	19	0.425	0.362	0.498	0.539	0.927	1.698	2.160	2.546	1.344	1.336	1.061	0.588
	20	0.430	0.381	0.383	0.510	0.952	1.379	2.165	2.512	1.428	1.257	0.922	0.604
	21	0.379	0.433	0.443	0.582	0.881	1.274	1.932	2.462	1.038	1.332	0.782	0.700
	22	0.437	0.440	0.501	0.555	0.974	1.073	1.722	2.333	0.945	1.205	0.965	0.692
	23	0.390	0.501	0.441	0.724	0.898	1.033	1.918	2.500	0.959	0.657	0.865	0.605
	24	0.421	0.492	0.516	0.729	0.788	1.234	2.053	2.511	1.150	0.772	0.669	0.590
	25	0.482	0.432	0.592	0.971	0.727	1.325	1.875	2.363	1.043	0.827	0.725	0.598
	26	0.440	0.487	0.594	1.185	0.703	1.305	2.125	1.770	0.971	0.602	0.820	0.555
	27	0.494	0.515	0.520	0.926	0.738	1.395	2.030	1.880	1.076	0.716	0.565	0.700
	28	0.424	0.460	0.520	0.740	0.632	1.397	1.632	2.033	1.289	0.639	0.560	0.668
	29	0.401	0.511	0.625	0.709	0.799	1.352	1.962	1.985	1.345	0.713	0.639	0.525
	30	0.407		0.422	1.083	0.906	1.803	1.835	1.596	1.470	0.623	0.698	0.495
31	0.439		0.502		1.309		1.852	1.575		0.684		0.547	
		13.6	12.9	14.7	20.4	30.8	50.0	55.8	69.3	37.0	37.8	25.7	18.8

Percent Increase/Decrease Compared to Previous Year (2019)

Million Gallons

	Jan	Feb	Mar	Apr	May	Jun	Jul	Aug	Sep	Oct	Nov	Dec	
2019	13.0	11.5	15.9	17.0	19.3	25.2	54.5	57.9	49.6	33.4	16.8	15.9	329.9
2020	13.6	12.9	14.7	20.4	30.8	50.0	55.8	69.3	37.0	37.8	25.7	18.8	386.9
%	4.3	12.2	7.6	19.9	59.7	98.7	2.5	19.7	25.3	13.2	53.3	18.5	17.3

2020 Daily Water Usage



2019/2020 Monthly Comparison

